

# Chapter 3 - *Macintosh Setup*

---

## **Chapter Overview**

Before You Begin

Installing XANTÉ Utilities (Macintosh)

    Readme.1st File

    Utilities Folder

    Downloads Folder

    Drivers Folder

Installing XANTÉ Command Center

Loading Printer Fonts

    Downloading to the Printer Memory or a Hard Disk

    Listing Downloaded Fonts

Setting the Margins

Turning the Start-up Page Off or On

# Notes

---

# Introduction

---

This chapter covers setting up to print in a Macintosh environment. This includes installing the XANTÉ Utilities and Command Center, loading printer fonts, setting margins, and controlling start-up page printing.

## Before You Begin

---

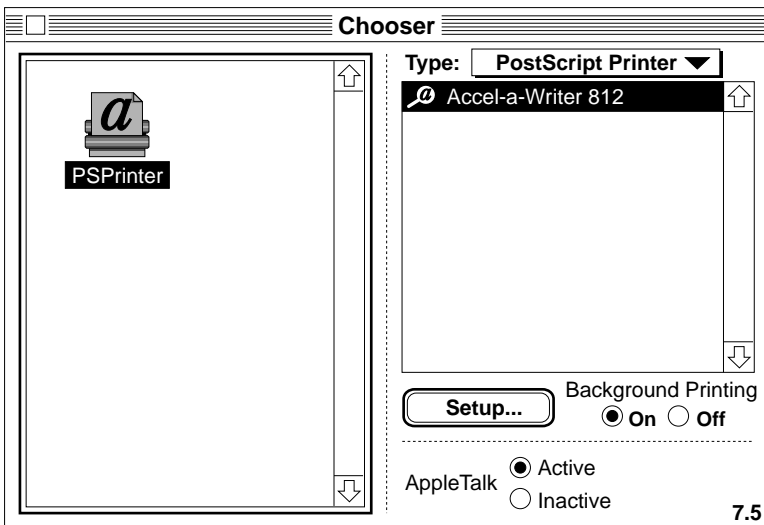
You should be familiar with all standard Macintosh procedures. This includes how to click, drag, copy, choose commands, select options, use buttons and boxes, locate files, and scroll. If you have questions on any of these procedures, see your Macintosh documentation.

Once your Accel-a-Writer 812 is installed, you need to do three things before using the printer. First, check the Readme.1st file on the XANTÉ Utilities disk for the Macintosh. Next, copy the XTAW8121.PPD from the XANTÉ Utilities disk onto your system, placing it in the Printers Description folder inside the Extensions folder in your System Folder. Finally, select your printer in the Chooser (which automatically selects the driver); then if you use PSPrinter 8.3 or LaserWriter 8.0 or later, select the PPD (PostScript Printer Description) for your printer using the following procedure.

1. Select Chooser from the Apple menu. The Chooser window appears.

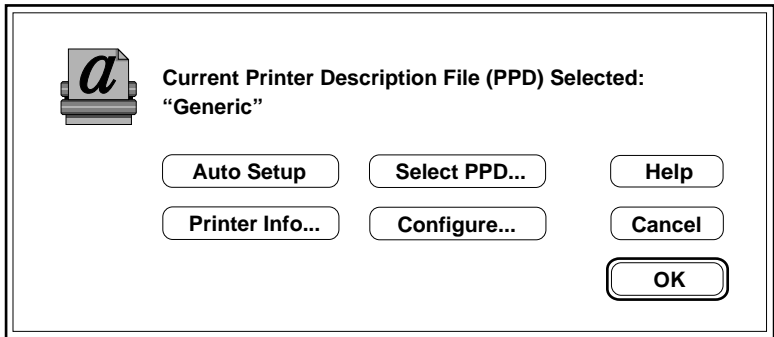
2. Select the appropriate PSPrinter or LaserWriter icon in the left side of the Chooser Window (fig. 3.1). A list of available printers appears in the right side of the Chooser Window, including your new Accel-a-Writer 812 (fig. 3.1).

**Note:** If you are on a network with many printers, you may have to scroll down to find the Accel-a-Writer 812 listing. If the listing does not appear, check all LocalTalk or Ethernet cable connections (see “Connecting in a Macintosh Environment” in chapter 2 for details).



*Fig. 3.1 Chooser Window*

3. Select the Accel-a-Writer 812 listing (fig. 3.1). If you do not use LaserWriter 8 (required by some applications, such as PageMaker), go to step 9.
4. Click Setup... in the Chooser window (fig. 3.1). A setup dialog box similar to the following appears.



*Fig. 3.2 Selecting the PPD File*

5. Click Select PPD... in the dialog box (fig. 3.2). A screen appears from which you can select a PPD file.
6. Locate the Accel-a-Writer 812 PPD file for your printer in the Printer Description folder inside the Extensions folder in your System folder.
7. Select the Accel-a-Writer 812 PPD file for your printer and click Select. You return to the dialog box in figure 3.2. If you have not added a second tray to your printer, skip to step 9.
8. Click Configure (fig. 3.2) if you have multiple trays and select the appropriate tray and memory from the pop-up menus. Then click OK to return to the setup dialog box.
9. Click Printer Info and when the next screen appears, click Update Info.
10. Click OK twice to return to the Chooser window where an icon appears next to the printer you have selected (fig. 3.1).
11. Close the Chooser window.

# Installing XANTÉ Utilities (Macintosh)

---

Your Accel-a-Writer 812 package includes a Macintosh XANTÉ Utilities disk. This disk contains printer-specific drivers, programs, and PostScript files to help you set up, customize, and troubleshoot your printer, along with instructions for printing with the LaserWriter 8 driver.

This section covers a brief description of the utilities and where to install them.

The Readme.1st file gives the location of files on the Macintosh XANTÉ Utilities disk. Before you load the utilities, create a new folder on your Macintosh hard drive and title it XANTÉ Utilities. Many of your utilities should be loaded into this folder.

The following list gives a brief description of each file so that you can decide which ones you may not want to load.

## Readme.1st File

---

Please read this file before installing your XANTÉ Utilities. It may contain updated information about your printer, the utilities software, and this manual. Also, if new options become available after this manual is printed, they will be listed.

You do not need to load the Readme.1st file. We suggest, however, that you print a copy for reference.

## Utilities Folder

---

The Utilities folder contains the Downloader 5.0.5 and XANTÉ Command Center.

### **Downloader 5.0.5**

The Downloader application downloads PostScript files, such as fonts or files to enable and disable start-up page printing to your printer.

See “Loading Printer Fonts” and “Turning the Start-up Page Off of On” later in this chapter for more details.

## **XANTÉ Command Center**

The Command Center utility provides a quick, easy way to perform many functions on your printer, such as changing the printer’s name and calibrating the print engine. See “Installing XANTÉ Command Center” later in this chapter for details

## **Downloads Folder**

---

The Downloads folder contains the following PostScript files to set up your printer for your working environment.

### **Initialize Disk.ps**

This file is used to initialize an external hard disk attached to the SCSI interface on your Accel-a-Writer 812 printer. For more details, see “Initializing the Hard Disk” in chapter 2.

### **Parmdump.ps**

This file causes pages to print which list all the system parameters. If you call XANTÉ Technical Support, you may be asked to print this page to check your system setup.

### **Sysparm.ps**

This file causes a page to print which lists the current system parameters (such as memory allocations and timeouts) and tray selections. If you call XANTÉ Technical Support, you may be asked to print this page to check your setup.

# Drivers Folder

---

Most Macintosh applications need only the “LaserWriter” or PSpriinter driver to print. However, several such as Adobe PageMaker, FreeHand, Adobe PrePrint, and QuarkXPress require special printer description files. These files are in the Drivers Folder which contains the following folders:

- Aldus APD
- Aldus PPD
- QuarkXPress PDF
- Printer Descriptions

These folders contain printer description files which work according to the software version you use. See the Readme.1st file to determine which file(s) you need and instructions for installing the file(s).

## **Aldus APD Folder**

This folder contains APDs (Aldus Printer Description files) which provide printer-specific information for older PostScript Level 1 applications.

## **Aldus PPD Folder**

This folder contains PPDs (PostScript Printer Description files) which provide printer-specific information for older application versions.

## **QuarkXPress PDF Folder**

This folder contains PDFs (Printer Description files) which provide printer-specific information for QuarkXPress.

## **Printer Description Folder**

This folder contains PPDs (PostScript Printer Description files) which provide printer-specific information for some newer PostScript Level 2 applications.

# Installing XANTÉ Command Center

---

Your printer package includes Command Center. This program allows you to perform many useful functions including the following:

- **Printer Status**—provides a fast, easy method to check printer status. For example, it can indicate if the printer is idle, ready to print.
- **Margin Adjustment**—allows you to adjust the printer margins. For details, see “Accurate Calibration Technology” in chapter 7.
- **X•ACT Calibration**—allows you to calibrate the printer’s engine to print more precise horizontal and vertical dimensions within the width of one dot. For details, see “Accurate Calibration Technology” in chapter 7.
- **Downloading PostScript Files**—allows you to download PostScript files to the printer.
- **Test Directory**—allows you to display a list of test files located on the printer. You have options of printing, adding, or deleting, or renaming most of these files. (A few files residing in the printer’s ROM cannot be renamed or deleted.)
- **Reboot Printer**—allows you to reboot the printer.
- **Startup Page**—allows you to control whether the start-up page prints when the printer is powered up.
- **AppleTalk**—has options for you to change the printer’s name or its EtherTalk zone name.
- **TCP/IP**—allows you to set the address or enable LPR (lineprinter).

To install Command Center, locate the icon on the utilities disk, and drag it onto your system wherever you want it. (It does not have to be in a particular folder.) To use the program, double click the icon to open it. Features not applicable to your printer will be grayed out.

# Loading Printer Fonts

---

Your XANTÉ Utilities disk for the Macintosh includes the Downloader 5.0.5 utility with which you can download additional PostScript fonts to your printer. These fonts can be downloaded to the printer memory or to an external printer hard disk. This section covers downloading fonts to both of these areas and listing the fonts in the printer.

## Downloading to Printer Memory or a Hard Disk

---

Fonts downloaded to the printer memory only last through the current power cycle. Fonts downloaded to the printer's external hard disk survive a power cycle. Once you download fonts, you can use them as resident fonts within your applications.

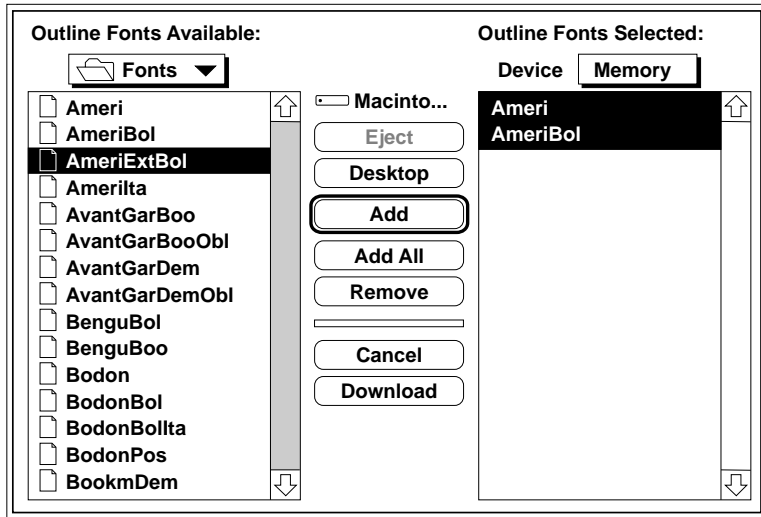
**Caution:** Downloaded PostScript fonts use the printer's virtual memory. If a PostScript error occurs after the fonts are downloaded, it may be due to insufficient memory. If so, it may be necessary to either download the font to an external hard disk or add more memory to the printer.

Use the following procedure to download fonts to printer memory or an external hard disk.

**Note:** If you are downloading fonts to a hard disk, make sure the disk has been attached to your printer's SCSI interface following the steps in "Connecting a Hard Disk" in chapter 2.

1. Locate the Downloader 5.0.5 utility and double-click the icon to open the utility.

2. Choose Download Font from the File menu. After the program locates the printer, a screen similar to the following appears.



*Fig. 3.3 Download Fonts to Memory or a Hard Disk*

3. Select Memory or Disk in the Device pop-up menu (fig. 3.3), depending on where you want to download the font(s).  
**Note:** If you have more than one optional hard disk and you select Disk, a drop-down menu allows you to designate the desired target disk.
4. In the left hand window, locate and open the folder containing the desired font(s) to download. (In the figure 3.3 example, the Fonts folder contains the fonts.)

5. Select the font you want to download and click Add to download or click Add All to download all the fonts in the open folder. The selected font(s) will appear on the right hand side of the window. See figure 3.3 for an example.

**Note:** If you change your mind about downloading a font that appears in the right hand window, select it and click Remove to delete it from the list of fonts to download.

6. Click Download and wait until the downloading finishes.
7. Choose Quit from the File menu.

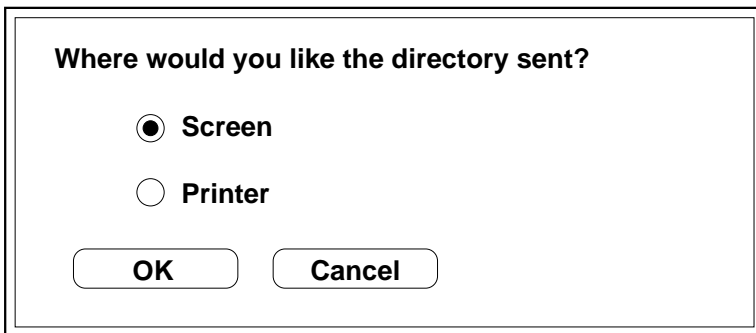
To remove downloaded fonts from the hard disk, see “Removing Downloaded Fonts” in chapter 6.

## Listing Downloaded Fonts

---

Use the following procedure to see a list of the PostScript fonts downloaded to the printer.

1. Locate the Downloader 5.0.5 utility and double-click the icon to open the utility.
2. Choose Printer Font Directory from the Special menu. A screen similar to the following appears.



*Fig. 3.4 Listing Downloaded Fonts*

3. Choose Screen to see the list of fonts on the screen. The Font Directory screen appears.  
  
*Note:* If you select Printer, only the fonts loaded in memory (not ROM) print.
4. Select Memory from the Device options to see a list of fonts stored in memory, or select Rom to see the fonts stored in ROM.
5. Click OK.
6. Choose Quit from the File menu.

## Setting the Margins

---

On rare occasions, the printable area of a new Accel-a-Writer 812 needs to be adjusted. If this is the case for your printer, you can make the minor adjustments using the XANTÉ Command Center's Align Paper... feature in the Printer menu.

Printer margins refer to the imageable area of the page, not to the margin settings in an application. You must always align the printer margins after using XANTÉ Accurate Calibration Technology (X•ACT). See "Accurate Calibration Technology" in chapter 7 for details.

## Turning the Start-up Page Off or On

---

The printer's factory default setting is to print the start-up page whenever the printer is turned on. You can save printer start-up time, paper, and toner by not printing this page. However, if you disable this feature, be sure to save a reference copy.

*Note:* If you want an occasional start-up page, press the On Line key to take the printer off line. Then, press the Test ← key.

A start-up page will print. After it prints, press the On Line key to put the printer back on line.

You can disable or enable start-up page printing by using the front panel or by using the Startup Page option under the General menu in XANTÉ Command Center. This section covers using these utility files. To use the front panel, see chapter 5, “Configuration.”

