

## Chapter 4 - Configuration

### Introduction

This chapter describes configuring printer features. Included are manual settings available through the front panel and advanced features available through PPD options. You can also configure the printer using XANTÉ browser utilities; for browser details, see "Using the Browser: Feature Access" in chapter 2 (Macintosh) or chapter 3 (PC).



PPD options override printer default settings for a specific job or for all jobs sent to the printer from your host.

### Front Panel

The printer's front panel provides printer status information and allows you to configure some printer features (fig. 4.1).

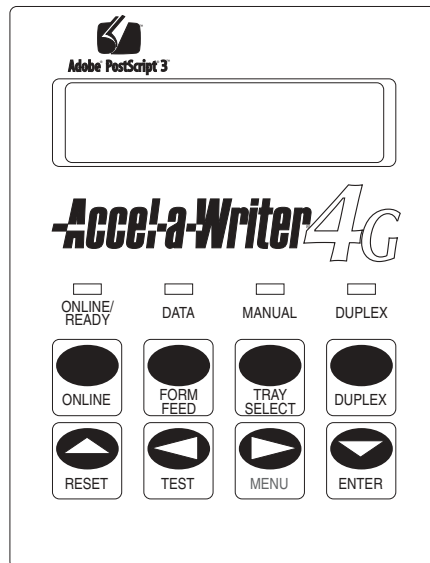


Fig. 4.1 Printer Front Panel

### Window

The printer's front panel window displays configuration menu options and messages. The messages indicate printer status, request operator help, and relay error or service information (fig. 4.1).

## Status Lights

Printer front panel status lights, or LEDs (Light Emitting Diodes), indicate printer status (fig. 4.1).



**Online/Ready LED** is on when the printer is ready to receive data. It is off when an engine error occurs.



**Data LED** is on and does not blink when the printer is receiving data. Blinking indicates that the printer is processing data.



**Manual LED** is on when the multipurpose feeder is selected.



**Duplex LED** is on when the printer is in edge or tumble duplexing mode for double-sided printing. It is off when the printer is in simplex mode for single-sided printing. This LED is active only if the duplexer is installed.

## Control Keys

Front panel control keys allow you to configure some printer features and to access the configuration menus.



**Online key** is used to take the printer on and off line. The window reads Ready/Idle when the printer is on line or Offline if it is off line. The printer must be on line to receive data from your computer.



**Form Feed key** allows you to feed a blank page through the printer. Some applications do not issue a form feed command at the end of a page. If this happens, take the printer off line and press the Form Feed key; after a blank page feeds, press the Online key to put the printer back on line.



**Tray Select key** allows you to change the default paper tray. Press once to display the current tray selection. Press the Tray Select key to toggle between the available trays.



**Duplex key** is used to toggle between single-sided, edge-duplex, or tumble-duplex printing. The Duplex LED is lit when duplexing is active.



**Reset key** allows you to return to the previous menu level when using configuration menus. To cancel a job that the printer is processing, take the printer off line and press the Reset key.



**Test key** allows you to scroll back through options on a menu level when using the configuration menus. To print a start-up page, take the printer off line and press the Test key. Then, press the Online key.



**Menu key** allows you to enter the menu structure when Ready/Idle or Offline appears in the window and to scroll forward through menus and options.



**Enter key** allows you to select the menu or option displayed in the window. When you select an option, an asterisk appears next to the option name in the window to indicate it is now the current setting.



See “Interface Control” later in this chapter for using the control keys to set the IP address.

## Configuration Menus

Use configuration menus to set printer features and interfaces defaults. This section describes using the configuration menus. The Menu Layout option in the front panel Utility: Print menu prints a sheet with the main configuration menu structure and current option settings.

As you scroll through options in a menu, an asterisk appears next to the option that is the current setting. If necessary or desirable, you can return to factory default settings (see “Resetting to Factory Defaults” later in this chapter).



PPD options override printer default settings for a specific job or for all jobs sent to the printer from your host.

## Selecting Menu Options

The following example explains changing the printer’s default resolution from 1200 x 1200 dpi to 600 x 600 dpi using control keys and configuration menus.

1. Make sure the printer is on and idle.

2. Press the Menu key until SETUP: GRAPHIC appears.
3. Press the Enter key to enter the Graphic menu.
4. Press the Menu key until GRAPHIC: DPI appears in the window.
5. Press the Enter key to enter the Dpi menu.
6. Press the Menu key until dpi: 600 600 appears.
7. Press the Enter key to select 600 dpi as the default. An asterisk appears next to the selection indicating it is now the current default.
8. Press the On Line key. READY/IDLE appears in the window.

The printer's default resolution is now 600 x 600 dpi.

## **Resetting to Factory Defaults**

There are two levels for resetting to factory defaults: Level 1 (full reset) and Level 2 (partial reset).

### **Level 1 Reset**

Level 1 resets all printer options to factory default settings.

To do a level 1 reset, turn off the printer, hold in the Online, Tray Select, and Test keys, turn on the printer. Release the keys after RESET 1 appears in the window.

### **Level 2 Reset**

Level 2 resets printer options to factory default settings except for printer margins, gamma settings, Novell network print server parameters, IP network parameters, and More X-ACT settings.

To do a level 2 reset, turn off the printer, hold down the Online and Tray Select keys. Release the keys after RESET 2 appears in the window.

## **Menu Structure**

Configuration menus allow you to configure many printer feature and interface defaults. The main configuration menu groups are Media, Utility, Graphic, and Interfaces. Use Media menus to configure the printer for the type of media being used. Use Utility menus to set printer feature defaults. Use Graphic menus to control advanced graphic features, and use the Interfaces menus to set printer network defaults.

## The PPD

The PostScript Printer Description (PPD) allows you to select many printer feature settings from your application's Print dialog box. These settings override printer default and other software settings. You can customize printer features for each job or for all jobs sent to the printer from your host without resetting printer front panel menus.

For these options to be available, the Adobe PostScript printer driver and your printer's PPD must be installed and configured properly. See chapter 2 (Macintosh) or 3 (PC) for details.

Usually printer specific options in the PPD are accessed through the Device Options tab (Windows 98 and Me), the Device Settings tab (Windows NT, 2000, and XP), and the Printer Specific Options menu on a Macintosh.

### Selecting PPD Options (Macintosh)

To configure a printer feature from the Print dialog box

1. Install and configure the AdobePS printer driver and your printer's PPD following the instructions in chapter 2.
2. Choose File: Print. The Print dialog box appears.
3. Make sure your printer is selected in the Printer drop-down menu; then, click General to display the list of options (fig. 4.2).



Fig. 4.2 Adobe Options Menu

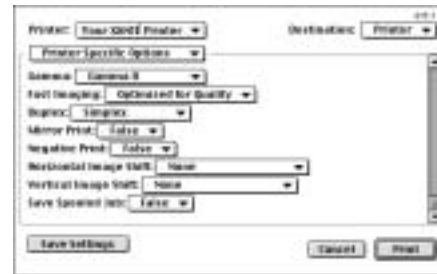


Fig. 4.3 Printer Specific Options Menu

4. Choose Printer Specific Options. The printer option menus appear (fig. 4.3).
5. Use the right scroll bar to locate the option; then, use the option's drop-down menu to select its setting. Repeat to configure other printer options.
6. Click Save Settings to save the Print dialog box settings as the defaults for all jobs sent to the selected printer.
7. Click Print to send the file to the printer.

## Selecting PPD Options (Windows 98 and Me)

To configure a printer feature from the Print dialog box

1. Install and configure the AdobePS printer driver and your printer's PPD following the instructions in chapter 3.
2. Choose File: Print. The Print dialog box appears.



Fig. 4.4 Windows 98 and Me Print Dialog Box

3. Make sure your printer is selected in the Name box (fig. 4.4); then, click Properties. The Properties window appears.
4. Click the Graphics tab to set the Resolution option.
5. Click the Device Options tab to set other printer options.



Fig. 4.5 Windows 98 and Me Device Options Tab

- a. Use the right scroll bar to locate the feature in the Printer features box. Highlight the feature to display the options in the Change Setting for box (fig. 4.5).
- b. Select the setting from the drop down menu in the Change Setting for box.
- c. Click Apply after you have made the desired changes.



For example, to change the printer memory setting, scroll through the Installable options until you see Installed Memory. Highlight it; then, select the amount of memory on the printer (see the memory size listed on the printer's start-up page). Click Apply.

6. Click OK. The Print dialog box reappears. Then, click OK to send the file to the printer.

### Selecting PPD Options (Windows NT/2000/XP)

To configure a printer feature from the Print dialog box

1. Install and configure the AdobePS printer driver and your printer's PPD following the instructions in chapter 3.
2. Choose File: Print. The Print dialog box appears (fig. 4.6).

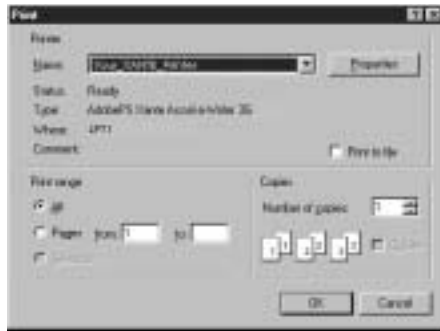


Fig. 4.6 Windows NT 4.0 Print Dialog Box

3. Make sure your printer is selected in the Name box in the Print dialog box (fig. 4.6); then, click Properties.
4. Click the Advanced tab to set printer options (fig. 4.7).



Fig. 4.7 Windows NT 4.0 Advanced Tab

5. Highlight the feature in the top box; then select the setting from the options in the bottom box (fig. 4.7).
6. Click OK. The Print dialog box reappears. Then, click OK to send the file to the printer.

## PPD Menus

PPD settings override printer default settings. The AdobePS printer driver and your printer's PPD must be installed and configured properly for PPD options to appear in your application's Print dialog box. See "Installing AdobePS Printer Driver and Printer PPD" in chapter 2 (Macintosh) or 3 (PC) for details.

On a Macintosh, use the Chooser's Auto Setup feature to set installable options to agree with the printer's configuration. To change PPD menu defaults, use the Print dialog box Save Settings button. See "Selecting PPD Options (Macintosh)," earlier in this chapter.

On a PC, PPD menu defaults and the installable options are set during PPD configuration. See "Configuring the PPD" in chapter 3.

The following chart lists features that can be configured from the Print dialog box.

Accurate Screens	Mirror Print
Duplex <sup>†</sup>	Enhanced Screens <sup>*</sup>
Resolution	Fast Imaging
Smooth Shading	Gamma <sup>*</sup>
Tray Switch <sup>§</sup>	

## 4-8 Configuration

- \* 4G
- † Optional on 20 ppm printers
- § PC Menu only



Some applications require additional configuration to access certain features. See your application documentation.

## Configuring Printer Features

Printer interface and features are set using front panel keys and menus, PPD options in your application Print dialog box, and XANTÉ utilities via your browser. This section describes available printer features and their configuration.

### Accurate Calibration Technology (X-ACT)

X-ACT (XANTÉ's patented Accurate Calibration Technology) allows you to calibrate printer (4G) line lengths as well as correct inaccuracies in printing width, height, skew, and angle. X-ACT is part of the Accel-a-Writer 4G's Graphic Software package.

You can use the front panel GRAPHIC: XACT menu or the browser More X-ACT feature. This section covers front panel calibration; see "More X-ACT" in chapter 2 (Macintosh) or 3 (PC) for details on the browser procedure.

Because of manufacturing variations and usage, a printer may not print lines with the exact dimensions specified by the application. X-ACT allows you to calibrate your printer to compensate for these differences.

### Front Panel X-ACT

Your printer's front panel GRAPHIC: XACT menu allows you to make 1/2 mm line length adjustments using the following procedure.



To use the front panel XACT, you need a metric ruler with 1/2 millimeter rule markings. Also, you *must* use the paper cassette, not the multipurpose feeder, when making X-ACT adjustments. The adjustments for one size media apply to every media size, so you do not have to make individual adjustments for each size.

1. Make sure the printer is on and idle. Then, make sure that media the size of your final output is loaded in the printer's paper cassette and the cassette is selected as the media source.
2. Press the Menu key until SETUP: GRAPHIC appears. Then, press the Enter key.
3. Press the Menu key until GRAPHIC: XACT appears. Then, press the Enter key.

4. Press the Menu key until Test Page appears. Then, press the Enter key. A page prints with 2 lines, Line A and Line B. The measurement listed by each line is the desired length for that line on that media size. In this example, Tabloid size 11" x 17" (257 mm x 431 mm) media is used. Line A should be 251.46 mm and Line B should 388.61 mm.
5. Measure Line A. Use the following procedures to adjust the printer for the correct line length.
  - a. Note the amount Line A is over or under 251.46 mm.
  - b. Press the Menu key until LINE A appears. Then, press the Enter key.
  - c. Press the Menu key until the amount which would most closely adjust the line to the desired length appears. Then, press the Enter key. For example, if Line A is 250.46 mm instead of 251.46 mm, select 1.00 mm to add one mm to make the line the correct length.
6. Measure Line B. Use the following procedures to adjust the printer for the correct line length.
  - a. Note the amount Line B is over or under 388.61 mms.
  - b. Press the Menu key until LINE B appears. Then, press the Enter key.
  - c. Press the Menu key until the amount which would most closely adjust the line to the desired length appears. Then, press the Enter key. For example, if Line B is 389 mm instead of 388.61 mm as it should be, select -0.50 mm to shorten the line to 388.50.
7. Press the Reset key to return to the previous menu level. Then, press the Menu key until XACT: TEST PAGE reappears and press the Enter key to print a new test page.
8. Repeat steps 5 and 6 until the line measurements agree with the lengths listed on the test page.
9. Press the On Line key when the line lengths are correct. READY/IDLE appears in the window.

Now the printer's line lengths are calibrated correctly.

## Accurate Screens

To maximize processing resources, your printer calculates the line screen from lpi and angle settings similar, but not necessarily identical, to the settings specified in your application. The Accurate Screens feature allows you to override this approximation and use the exact settings specified in your application to calculate the line screen. When this feature is enabled, there may be an increase in processing time because of additional demand on printer resources.

Set Accurate Screens from your application Print dialog box.

- **False**, the factory default, disables Accurate Screens and uses the printer's standard line screen calculation.
- **True** allows the printer to build the line screen based on the specific lpi and angle settings in your application.



Accurate Screens is active in the PPD only if the Enhanced Screens menu is set to Normal.

## Density

The Density menu, UTILITY: DENSITY, allows you to control the toner intensity. Options include 0-Light, 1, 2, 3, 4-Normal (the factory default), 5, 6, and 7-Dark. The amount of toner applied to your job increases as the setting number increases.

You also can increase or decrease the amount of toner laid down using the print density dial. See "Adjusting Print Density" later in this chapter for more details.



If you have not used a toner cartridge for several days, toner may have settled and need to be redistributed for consistent coverage. See "Redistributing Toner" later in this chapter for details.

## Duplexer

If the optional duplexer is installed, you can select from three duplexing options using either the printer's front panel Duplex key or your application's Print dialog box.

- **Simplex** standard printing on one side of the page.
- **Edge-duplex** double-sided printing in edge to edge or book style (fig. 4.8).
- **Tumble-duplex** double-sided printing in a flip chart style (fig. 4.8).

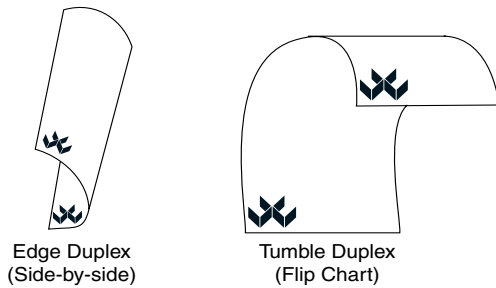


Fig. 4.8 Edge and Tumble Duplexing

The Duplex key allows you to scroll through options in the front panel window. The Duplex LED is lit when either Edge-duplex or Tumble-duplex is selected.

The duplexer must be configured as an option in the PPD before you can select it through the Print dialog box. See chapter 2 (Macintosh) or 3 (PC) for details.



The duplexer option is not available on the Accel-a-Writer 4G if a 2400 dpi resolution upgrade is installed. Also, duplexing RAM requirements vary according to media size. See “Printer Memory Requirements” in chapter 6.

## Fast Imaging

Adobe PostScript 3’s Fast Imaging feature allows you to select from two methods of image data compression for faster printing when image quality is not the primary concern.

Set Fast Imaging from your application Print dialog box.

- None, the factory default, prints at normal speed and with no data compression.
- Optimized for Quality compresses image data for faster printing than normal but with some (usually not noticeable) loss of image quality.
- Optimized for Speed implements a greater degree of data compression to provide the fastest print time but with the possibility of a noticeable loss of data quality.



Optimize selections do not function if the print job contains an image that is masked or rotated to anything other than 0°, 90°, 180°, or 270°.

## Font Accelerator

Font Accelerator allows you to set aside a portion of RAM disk to store fonts for quick system access. Font Accelerator automatically loads the most recently used fonts from the printer's optional hard disk into the RAM disk. This eliminates time usually required to access fonts from the hard disk. The Font Accelerator menu is active only if fonts are downloaded to an optional hard disk on the printer and RAM disk is enabled for 1 MB or more.

Set Font Accelerator from the UTILITY: FONT ACCEL configuration menu. Options are 0%, 20%, 40%, 60%, 80%, and 100%. These options indicate the percentage of RAM disk that the Font Accelerator can use. The factory default is 100%.

## Fuser Temperature

The Fuser Temperature feature allow you to adjust the printer's fuser temperature for the type of media used. Set the fuser temperature from the CONFIGURE: FUSER front panel configuration menu. Options are Cool and Warm and the default depends upon the selected media.

## Halftone Calibration Technology (Gamma)

XANTÉ's Halftone Calibration Technology (4G) allows you to adjust printer output for ink, media, file, and environmental conditions. For example, if a scanned image is too dark, you can select a new gamma setting to lighten and enhance the details. Gamma corrections bring out details that can be lost when printing at higher line screens or when dark photos are scanned.

XANTÉ provides seven standard gamma correction curves and you can create up to seven custom curves. You can select any custom or standard gamma curve on a job by job basis using the front panel GRAPHIC: GAMMA configuration menu or the Print dialog box Gamma menu.

XANTÉ Gamma curves 1 through 5 progressively lighten midrange grayscale values in an image. Gamma 0, the factory default, makes no change to the image and Gamma 6 produces a reverse (negative) image without changing the image in the application. The graphs in figure 4.9 show the changes to the midrange gray levels for Gamma curves 0 through 6.

You may want to create and download up to seven custom gamma curves to calibrate your printer for specific conditions. Also, linearization can be used to the level of accuracy you need. See the linearization section in "PostScript Features (AccelaFont, DPI, Linearization, LPI, Margins, More X-ACT, and VM)" in chapter 2 (Macintosh) or 3 (PC) about creating custom gamma curves.

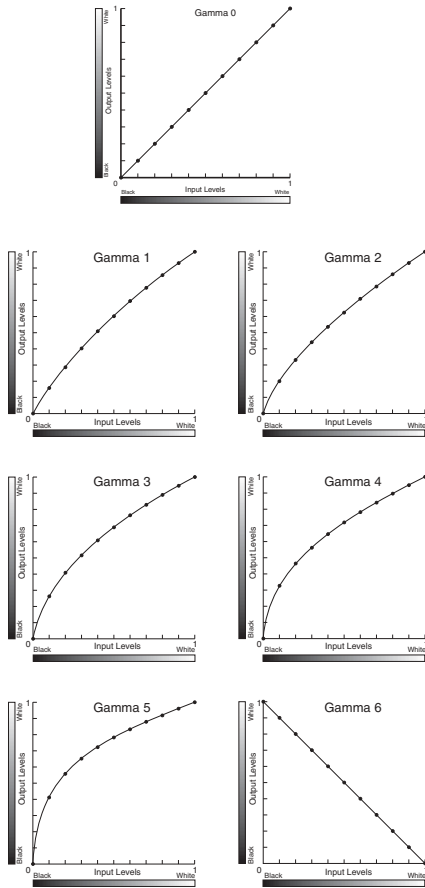


Fig. 4.9 Gamma Corrections 0 through 6

## Hard Disk

The Hard Disk feature only appears if you have the optional hard disk installed on the printer. This feature allows you to format the optional hard disk which must be done before you can use that disk.



You must format the optional hard disk before it can be used to store downloaded fonts. Formatting erases *all* information stored on that disk.

Use this feature from the UTILITY: HARD DISK configuration menu. The only option is Format.

## Interface Control

Your printer features three standard simultaneously active interfaces: Parallel, Ethernet, and USB. The parallel and Ethernet ports allow you to send files from Macintosh computers concurrently; all three ports allow you to send files from PC computers concurrently. The Ethernet port supports EtherTalk, LPR, TCP/IP, and IPP protocols.

Use Interfaces: Network configuration submenus to set printer interface options for the IP Address, Net Class, Net Mask, Gateway, and DHCP. See chapter 2 (Macintosh) or 3 (PC) about configuring the Ethernet interface for your network environment.

## IP Address, Net Mask, and Gateway Configuration

When using the Ethernet interface and TCP/IP protocol, use the front panel IP address (NETWORK: IPADDR), Network Mask (NETWORK: NET MASK), and Gateway (NETWORK: GATEWAY) configuration menus and the front panel keys to set the address, mask, and gateway as follows:

- Reset key increases the current number flashing by one.
- Menu key moves to the next number to the right of the current number flashing.
- Test key moves to the next number to the left of the current number flashing.
- Enter key accepts new address (if valid) and returns to NETWORK: IPADDR menu. The menu will display a message if the address entered is invalid.



You must turn the printer off and restart it for the new IP address to take effect.

Check with your System Supervisor for the correct settings.

## Net Class

Use the front panel Net Class (NETWORK: NET CLASS) configuration and front panel keys to select the network class setting. Menu options include Class A, Class B, and Class C (the factory default). Check with your System Supervisor for the correct class.

## DHCP

Use the front panel DHCP (NETWORK: DHCP) configuration menu and front panel keys to select the DHCP setting. Menu options are Yes to enable (the factory default) and No to disable this feature. Check with your System Supervisor for the correct DHCP setting.

## Jam Recover

The Jam Recover feature reprints the last page processed after a paper jam is cleared.

*Configuration 4-15*

Set Jam Recover from the UTILITY: JAM RECOVERY configuration menu. Options are On to enable and Off (the factory default) to disable this feature.



If you must turn off the printer to clear a paper jam, Jam Recover is not effective because all print job information in RAM is lost.

### **Job Separation (Print Job Offset)**

Job separation where each job is offset is available only when the optional duplexer is installed, but it can be used whether the duplexer is set to simplex or one of the duplex options. The feature distributes print jobs into the output tray with an offset of approximately 1.00" (25 mm), allowing you to separate jobs easily.

Set this feature through the UTILITY: JOB SEPERATION configuration menu or from the Print dialog's box Job Separation menu. Yes (True in the Print dialog box) enables this feature and No (False in the Print dialog box) disables it. The factory default is No.

### **Language Options**

Language options allow you to select the language for the printer's front panel window. Set the display language from the UTILITY: LANGUAGE configuration menu. English is the factory default; other options are Spanish (Español), French (Français), German (Deutsch), and Japanese (Katakana).

### **Lines Per Inch (LPI)**

Lines per inch settings allow you to control the number of gray levels and enhance the resolution quality of your printed images.

Usually you set lines per inch through your application or you can use the LPI option in your XANTÉ browser utilities. However, when LPI is not a software option, you can use the front panel GRAPHIC: LPI configuration menu. Line screen options range from 5 to 210 lines per inch with a factory default of 85 lpi.

### **Media Types**

Media Types options in the front panel allow you to select the default media and set configurations for specific media. The MEDIA TYPES: CASSETTE menu allows you to select the default media for your printer. Media options are Paper (the factory default), Heavy Paper, Cover, Transparency, Labels, and five user defined types of media.



Throughout this document, all references to media are shown as Paper (the factory default). The same menu settings apply to Heavy Paper, Cover, Transparency, Labels, and the five user-defined types of media.

The MEDIA TYPES: CONFIGURE menu allows you to select media types as well as to configure that media's fuser temperature through a Fuser submenu. See "Fuser Temperature" earlier in this chapter for more details. The factory default for Paper and Transparency is Cool; Warm is the factory default for Heavy Paper, Cover, and Labels.

### **Media Weight**

Media Weight allows you to designate the type of media used and to access correct temperatures for that media. Set Media Weight from your application Print dialog box. Options are Paper, Heavy Paper, Cover, Transparency, and Labels media weights.



You can create custom gamma curves to calibrate or adjust your printer for specific media weights. For details see "Halftone Calibration Technology (Gamma)" earlier in this chapter and see the linearization section of "PostScript Features (AccelaFont, DPI, Linearization, LPI, Margins, More X-ACT, and VM)" in chapter 2 (Macintosh) or 3 (PC).

### **Mirror Print**

Mirror Print allows you to produce a mirror image which is reversed left to right (fig. 4.10). This type of image is used to produce right reading documents required for imaging silk screens or metal plates.

Set Mirror Print from your application Print dialog box. To ensure the highest quality when producing mirror images, use this menu in the Print dialog box rather than an application setting. True enables this feature and False (the factory default) disables it.



Fig. 4.10 Mirror Image

### Multipurpose Feeder Media Sizes (Manual Feed)

Set the media size used in the multipurpose feeder from the UTILITY: MANUAL FEED configuration menu. The factory default media size is Letter; other options are

Legal	A3	C5 Env (envelope)
A4	Executive	Universal (13 x 18.5)
B4	Com10 (envelope)	Custom
B5	Monarch (envelope)	
11 x 17	DL Env (envelope)	

To print on a media size not listed in the Manual Feed menu, select Custom and select the paper size through your application. See “Media Sizes” in chapter 5 for a description of these media sizes.

### Paper Mode

The paper cassette media guides activate cams which notify the printer of the paper size. Because some international and North American paper sizes are very similar in size, the UTILITY: PAPERMODE configuration menu specifies whether the cassette setting is for North American paper sizes (US) or for International paper sizes (Euro).

### Power Save

Power Save conserves power when the printer is not in use. When enabled, the feature puts the printer into a low-power state after 30 minutes of inactivity.

Set Power Save from the UTILITY: POWER SAVE configuration menu. Off, the factory default, disables this feature; On enables it.

## Printer Timeout

The Timeout feature allows you to select the number of seconds the printer waits for additional data before cancelling a job and returning to the READY/IDLE state.

Set Timeout from the UTILITY: TIMEOUT configuration menu. The factory default of 40 seconds (40 Sec) is an average setting. Set timeout according to the type of files you send. Use a low setting for small, simple files to prevent an indefinite tie-up on one job. Use the 300 or Never setting for large files, such as graphic intensive or CAD (Computer Aided Design) files, to allow enough processing time. With the Never selection, the printer does not timeout; it waits until it receives additional data or until the printer is reset.

## RAM Disk

RAM Disk allows you to set aside a section of printer RAM to be used as a read/write device for implementing XANTÉ's Font Accelerator.

Set RAM Disk from the UTILITY: RAM DISK configuration menu. 0, the factory default, disables RAM disk. Options are in 1 MB increments to the maximum available RAM, which is the installed RAM minus 32 MB (the base amount of RAM required by the system). The printer must be restarted for the RAM disk setting to become active.

## Resolution Options (dpi)

The standard configuration is 600 x 600 dpi (dots per inch) for the Accel-a-Writer 4N with a 1200 x 1200 dpi upgrade available. The 4G has standard 600 x 600 and 1200 x 1200 dpi resolutions, which print at 20 page per minute for letter/A4 size paper. The optional 2400 x 2400 upgrade for the 4G includes all standard Accel-a-Writer 4G features and provides 10 page per minute printing of letter/A4 size paper at all three resolutions.



See "Printer Memory Requirements" in chapter 6 about the RAM required to print at higher resolutions.

Set available resolutions using either the GRAPHIC: DPI configuration menu or the Print dialog box's Resolution menu.

If the resolution upgrade is installed and adequate RAM is available, but the upgrade cannot be selected in your application Print dialog box (it is grayed out), RAM may not be configured properly in the PPD. See the section on configuring the PPD for your operating system in chapter 2 (Macintosh) or 3 (PC).

## Smooth Shading

Smooth Shading allows you to use the Adobe PostScript 3 method of rendering gradient blends. Smooth Shading produces the highest quality image at the selected resolution. For some images, PostScript files created with Smooth Shading are smaller and print faster than those created using PostScript Level 2.

Set Smooth Shading from your application Print dialog box. Off, the factory default, disables this feature. Options of Maximum, High, Medium, Low are available.

## Soft Error

Soft Error alerts you that the printer requires attention. Examples are low toner and low paper messages.

Set Soft Error using the front panel UTILITY: SOFT ERROR configuration menu. Yes, the factory default, enables this feature; No disables it.



While soft error messages are helpful, occasionally some software misinterprets the messages. If you run into problems with particular software, try disabling this feature.

## Spot Function (Enhanced Screening and Dot Shape)

The Spot Function feature controls both Enhanced Screen and dot shape options. XANTÉ's Enhanced Screening Technology (4G) allows you to increase the number of levels of gray produced for a line screen setting. Shape options allow you to select the shape of dots that make up the screen pattern for printing the calibration and verification pages.

Shape options include Line, Round, and Ellipse. If you select one of these shapes in the Spot Function menu, the correct Enhanced Screen level of gray is activated automatically. However, you can set enhanced screening without selecting a screen shape.

Set Enhanced Screening from the GRAPHIC: SPOT FUNCTION configuration menu or the Print dialog box Enhanced Screens menu. Normal, the factory default, uses the line screen set in your application. Enhanced Screening options are 145 Gray Levels, 197 Gray Levels, and 256 Gray Levels. The following chart lists the line screen setting for each option at different resolutions.

Levels of Gray	Line Screens		
	<u>600 dpi</u>	<u>1200 dpi</u>	<u>2400 dpi</u>
145	70 lpi	140 lpi	282 lpi
197	60 lpi	120 lpi	242 lpi
256	53 lpi	106 lpi	212 lpi



Accurate Screens is active in the PPD only if the Enhanced Screens menu is set to Normal.

### Start-up Page

The Start-up Page feature prints a page that lists the selected resolution, installed RAM, hard disk identities, page count, enabled interfaces, and network information (if the Ethernet upgrade is installed) each time the printer is turned on.

Set Start-up Page from the UTILITY: START PAGE configuration menu, from the browser Informational Pages, or by downloading Adobe PostScript files to the printer.

In the front panel UTILITY: START PAGE menu, On (the factory default) enables the feature and Off disables it. In the browser utilities, Informational Pages allows you to turn the Start-up Page feature on or off and Utilities Pages allow you to print this page on demand.

XANTÉ Utilities CD-ROM contains the PostScript files Startpgon.ps and Startpgoff.ps. Download these files to the printer to enable (Startpgon.ps) or disable (Startpgoff.ps) the feature. See “PS Files Folder” and “Using Adobe Downloader” in chapter 2 (Macintosh) and “PS\_Files Folder” in chapter 3 (PC) for instructions.

To print a start-up page manually, take the printer off line and press the Test key. After the page prints, press the Online key to put the printer back on line.

### Toner Cartridge Control

If your printer does not produce the rich, black images that you expect, try redistributing the toner in the cartridge and adjusting the print density before replacing the toner cartridge.

### Redistributing Toner

If you have not used the toner cartridge in several days, toner may have settled. Remove the cartridge from the printer, and shake the cartridge gently to redistribute toner. Replace the cartridge in the printer. See “Toner Cartridge” in chapter 1.

## Adjusting Print Density

You can increase or decrease the amount of toner laid down by the printer using the print density dial.



The amount of toner used increases as printer dial settings move from low (L) to high (H). Printing with too high a setting shortens the life of the toner cartridge and may degrade print quality.

To adjust the print density dial

1. Open the multipurpose feeder by grasping the handle in the top center of the cover and pulling down (fig. 4.11).



The multipurpose feeder does not open to a 90° angle. To prevent damage to the feeder, do not exert strong pressure or place heavy objects on it.

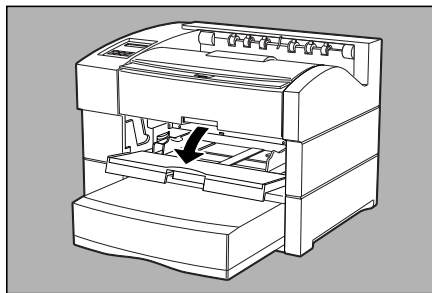


Fig. 4.11 Open Multipurpose Feeder

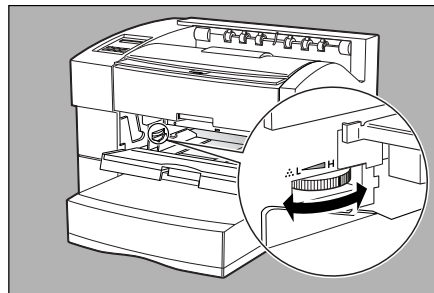


Fig. 4.12 Adjust Print Density Dial

2. Turn the print density dial toward the H (Higher density) to darken the print or toward the L (Lower density) to lighten the print (fig. 4.12).
3. Close the Multipurpose Feeder.



Check the print density dial when you replace a toner cartridge. The setting required for the previous cartridge may be too high or too low for the new cartridge.

## Toner Page

The Toner Page feature automatically prints a toner reorder form when the cartridge needs to be replaced. To order a new cartridge, fill out the form and return it to XANTÉ or to your XANTÉ vendor. If the feature is enabled and toner is low, the reorder form prints every 250 pages.

Set Toner Page from the UTILITY: TONER PAGE configuration menu. Yes, the factory default, enables this feature; No disables it.

## **Tray Selection Options**

You can select a specific tray as the default media source or you can use tray chaining to automatically switch to another source for media when the current source is empty.

### **Selecting a Specific Tray**

Use the Tray Select control key or your application's options to select a specific tray as the media source. The Tray Select key allows you to scroll through tray options in the window. Options are man feed (multipurpose feeder), cassette (standard cassette), upper optional, and lower optional. The last two selections appear only if these optional trays are installed.

In most Macintosh applications, use the Print dialog box Paper Source options to specify the media tray.

- The All pages from options allow you to choose a specific tray or use the printer's default to print all pages of a job.
- The First page from and Remaining from options allow you to specify one tray for the first page and a different tray for the rest of the print job.

In most PC applications, you can specify the media tray on the Paper Source tab of the Page Setup dialog box or on the Paper tab of the Print dialog box's Properties section.

- The AutoSelect Tray option directs the printer to use the media source that contains the paper size you selected in the file.
- Other options (Cassette, Upper Optional Tray, Lower Optional Tray, and Manual feed) direct the printer to use a specific tray. Optional tray selections are valid only if these trays are installed.

### **Enabling Tray Chaining (Tray Switching)**

Use the UTILITY: TRAY SWITCHING configuration menu or your Print dialog box options to enable tray chaining. Your printer allows you to chain to all paper cassettes and the multipurpose feeder if the following conditions are met.

- All selected media sources must contain the same size media. If the printer detects a different size media when it switches to a new tray, a Paper Out message appears.

- All trays must be inserted properly. When tray chaining is enabled, an incorrectly positioned tray prevents the printer from printing.

Use the UTILITY: TRAY SWITCHING configuration menu to change the printer's default tray chaining option. Normal enables tray chaining to all installed paper cassettes. Manual Feed enables tray chaining to all installed paper cassettes and the multipurpose feeder. Off, the factory default, disables chaining.

The Tray Switch menu in the Print dialog box of Windows 98 and Me as well as some Macintosh applications allow you to override printer default setting for jobs sent to the printer from your system. True enables tray chaining to all cassettes and the multipurpose feeder. False disables chaining.

Most Macintosh applications allow you to configure the printer's tray chaining feature using the If the Cassette is out of paper option in the Print dialog box Error Handling menu.

- The Use printer's default option uses the printer's front panel Tray Switch menu setting.
- The Switch to another cassette with the same paper size option implements tray chaining to all cassettes and the multipurpose feeder.

### **Virtual Memory (VM)**

The VM menu, UTILITY: VM allows you to adjust the size of your PostScript virtual memory in Megabytes. This setting controls the printer's default virtual memory setting at power up. The minimum value allowed is 9 MB, 12 MB is the factory default, and the maximum value is 40% of installed RAM.

### **Utility Pages**

The Utility: Print configuration menu includes options to print various utility pages needed for different printer functions. Options include Calibration, Font List, Font Sample, Low Toner, Start Page, Verify, Menu Layout, and Engine Testpage.

Calibration — Prints a sample Calibration Page which show the printer's current performance as a basis for calibration during linearization.

Font List — Prints a page listing the Adobe PostScript 3 fonts resident on your printer.

Font Sample — Prints a page with samples of the Adobe PostScript fonts resident on your printer.

Low Toner — Prints a toner reorder page. (See "Toner Page;" ch. 2).

Start Page — Prints a printer start-up page.

Verify — Prints a verification page for calibration during linearization.

Menu Layout — Prints a page listing the front panel menus and their current settings.

Engine Testpage — Prints an engine test page that has intersecting parallel and vertical lines that should be unbroken when the engine is printing correctly.

◇◇

